

Washington Bridge Westbound Demolition

October 11, 2024



Overview



Questions -- <https://publicinput.com/ridotwbdemo>
Project Website – <https://washington-bridge.com/>

Agenda

- Project Scope
 - Noise, Dust, and Traffic Impacts
 - Demolition Groupings
 - Next Steps
-
- Questions can be posted at this link:
<https://publicinput.com/ridotwbdemo>
through October 18

Project Scope

Demolition of Westbound Bridge

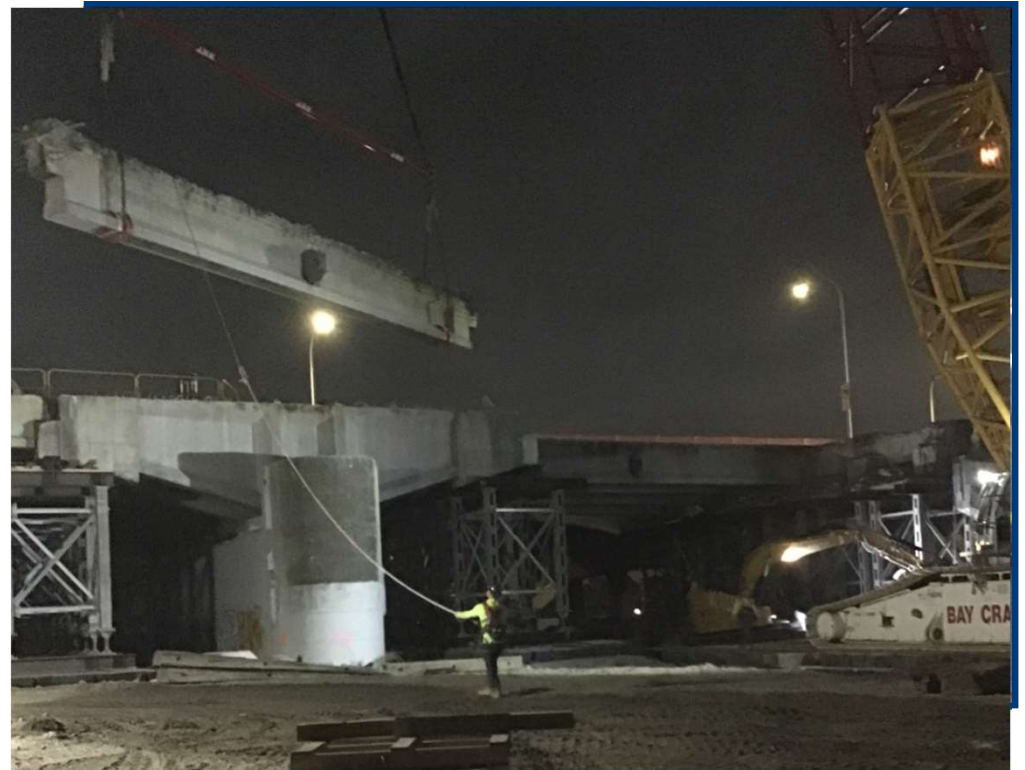


Bridge Demolition To Date



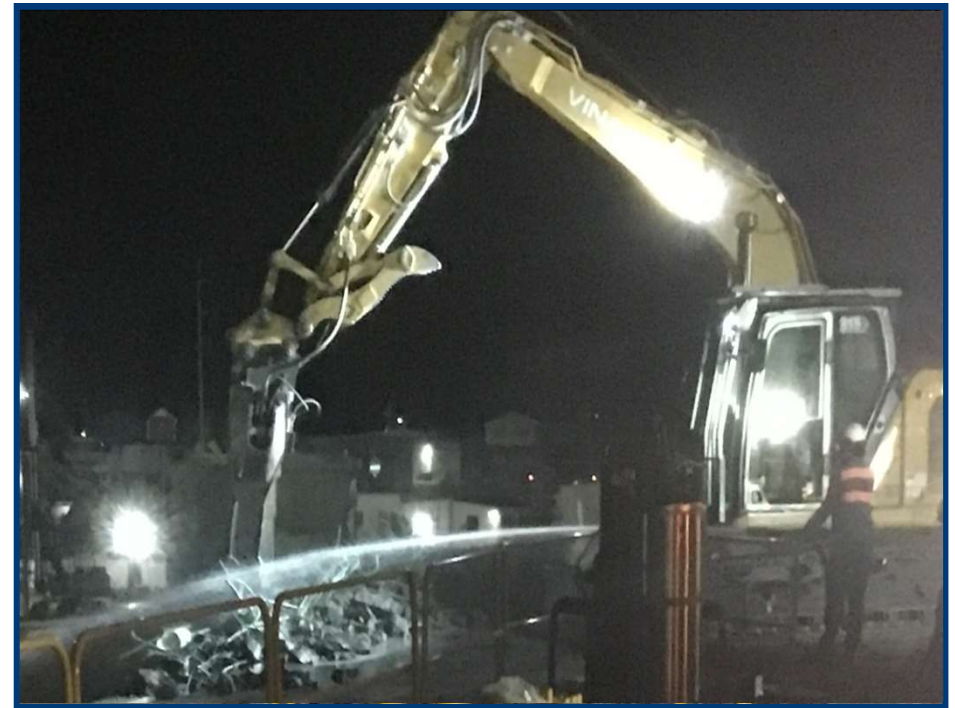
Noise

- Only 2-3 nights of noisy overnight hammering remain.
- Remaining night work involves less invasive noise from activities such as saw cutting, operation of equipment, and other typical construction noises
- All additional hammering required to remove the deck will only occur during daytime work hours.
- Day work: 6 a.m. – 9 p.m.
- Night work: 9 p.m. – 6 a.m.



Dust Control

- Concrete is sprayed with water as it is demolished
- We use concrete saw cutting machines with dust mitigation systems
- Drilling equipment with HEPA vacuum filters to minimize concrete dust
- As an additional measure, real time monitoring systems are in place to inform the team of dust levels in the air



Traffic Impact

- Necessary overnight closures of Gano St. will continue in October
- Approx. 1 week detour of Waterfront Dr. beginning Tuesday, 10/15
- Gano St. Bike Path maintained throughout demolition with limited overnight detours
- No impacts to the George Redman Linear Park
- Any changes to these planned impacts will be updated via a travel advisory.



Four Groupings of Demolition

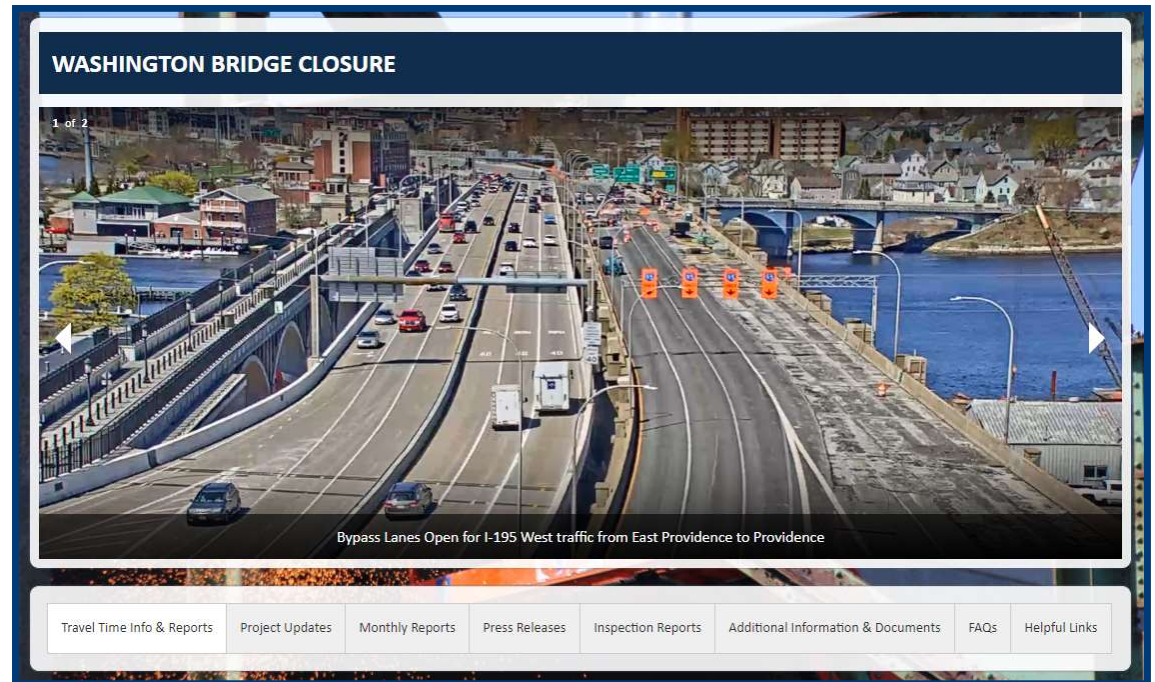


Next Steps

- Add your project questions to the Meeting Q&A
- Additional questions may be until October 18th posted here:
<https://publicinput.com/ridotwbdemo>
- Responses to questions received to be posted by Nov. 1
- Follow demolition project progress on the RIDOT website:
www.Washington-Bridge.com

Washington Bridge Closure Web Page

- Travel time info & reports
- Project updates
- Monthly reports
- Press releases
- Inspection reports
- Additional information & documents
- FAQs
- Helpful links



[Washington Bridge Closure - Rhode Island Rhode Island Department of Transportation](#)

Thank You



Washington Bridge Closure
Web Page

