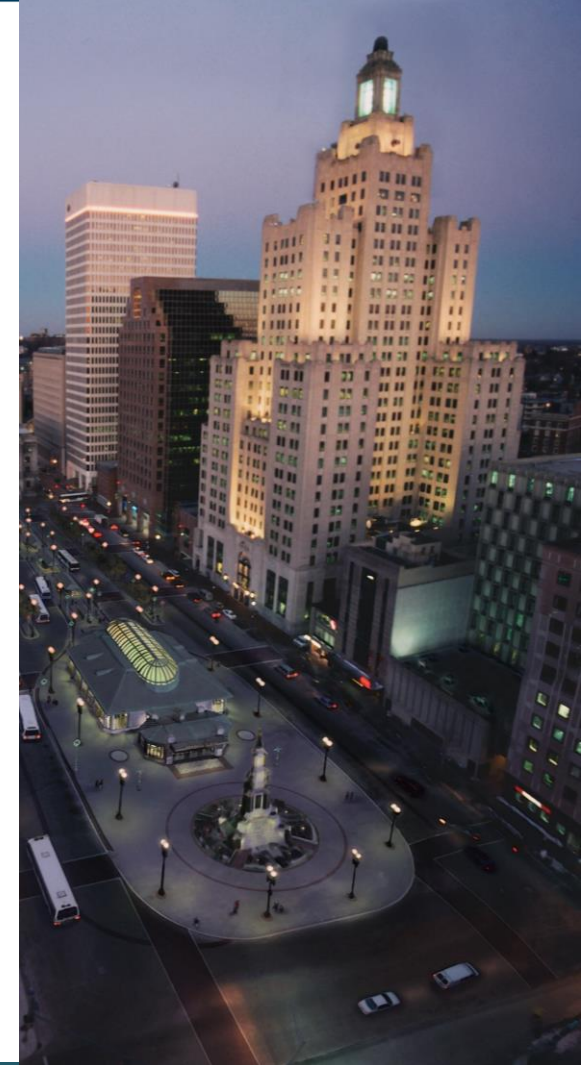




RHODE ISLAND PUBLIC TRANSIT AUTHORITY

A Proposal for a Growing RIPTA:  
Dorrance Street Transit Center  
February 24, 2022 | March 8, 2022

- **Background**
- **Goals**
- **Project Overview**
  - Transit Center Details
  - Service Impacts
- **Next Steps**
- **Questions & Answers**





- \$35M bond passed in 2014 by voters to improve transit infrastructure
- Several iterations of a project have evolved over the years, but none have advanced past a conceptual phase
- Since 2014, much has changed for transit in RI
  - Adoption of Transit Forward RI 2040
  - RIPTA is working towards full electrification
  - RIPTA is developing new hubs in Pawtucket, Warwick, and South Kingstown
- Riders need a transit center that keeps pace with where transit in Rhode Island is going



# Why does RIPTA need a new transit center?

- RIPTA is growing
  - Transit Forward RI 2040
  - Expanded service the last two service changes with more improvements scheduled
- Kennedy Plaza is sprawling and has too many competing interests
  - Creates maintenance and management issues
- RIPTA passengers deserve an experience that treats them with dignity and makes daily travel easier



## 1. Create a transit center that puts passenger needs first

- Make transferring easier
- Prioritize safety and security
- Improve passenger amenities
  - More benches
  - Restroom access
  - Expanded customer service opportunities
  - Better real-time arrival information

## 2. Improve operational efficiency

## 3. Create a space that is manageable

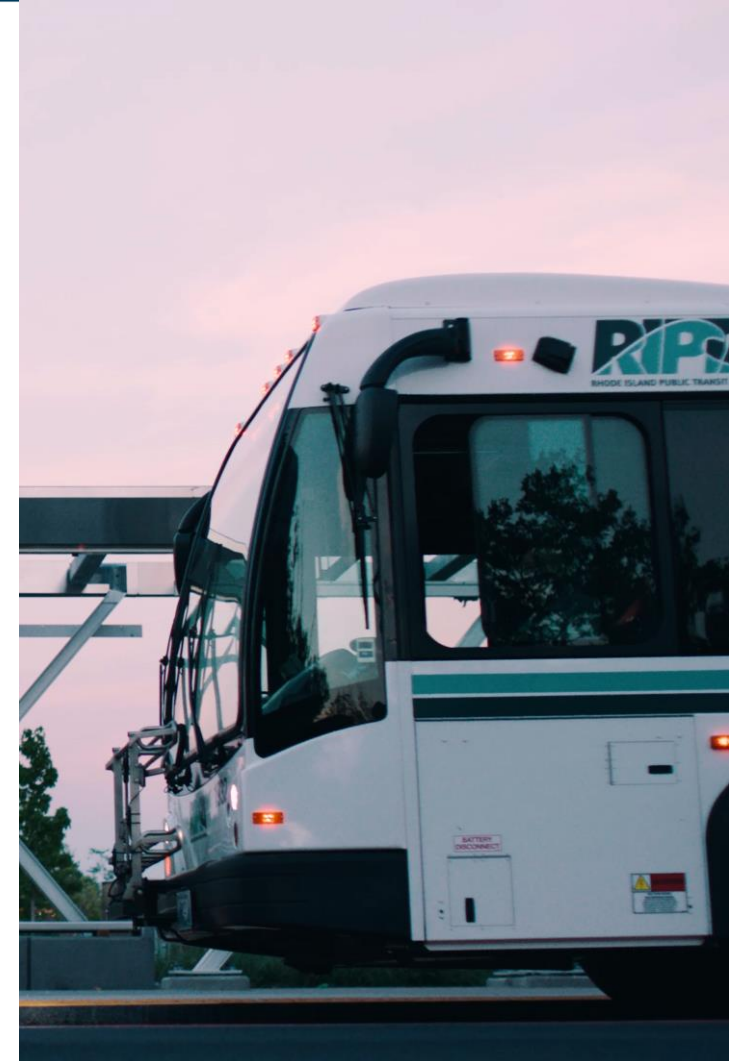
## 4. Remain centrally-located

## 5. Accommodate a growing RIPTA

- Planned growth per Transit Forward RI 2040

## 6. Support the State's economy

## 7. Create a transit experience that elevates the lives of riders





# Dorrance Street Transit Center

## What is the Dorrance Street Transit Center?

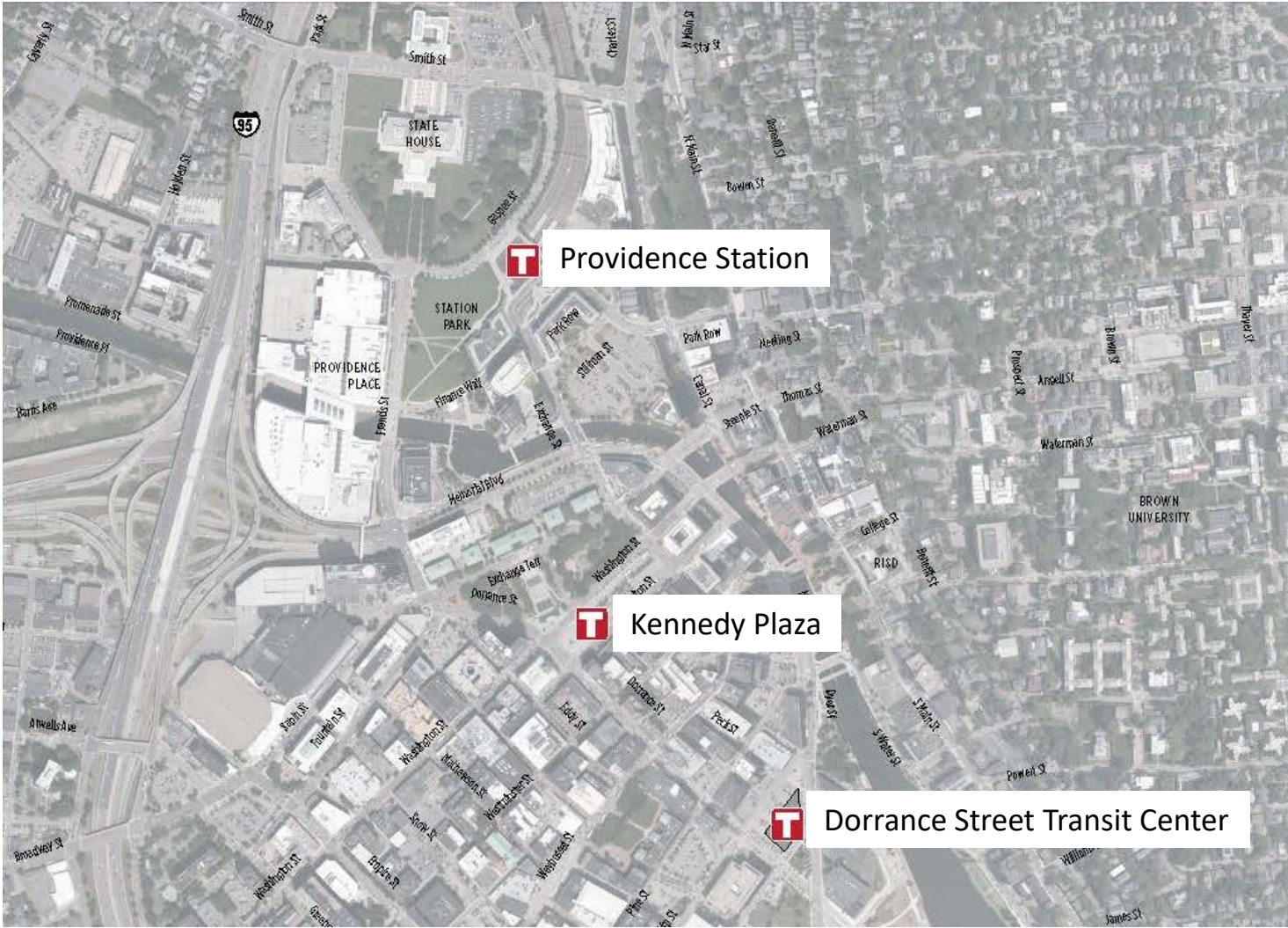
- A mixed-use development that is proposed to include a transit center, retail, administrative offices, workforce housing, and parking

## Where is the Dorrance Street Transit Center?

- Located in the blocks bounded by Dorrance Street, Friendship Street, Clifford Street, and Dyer Street

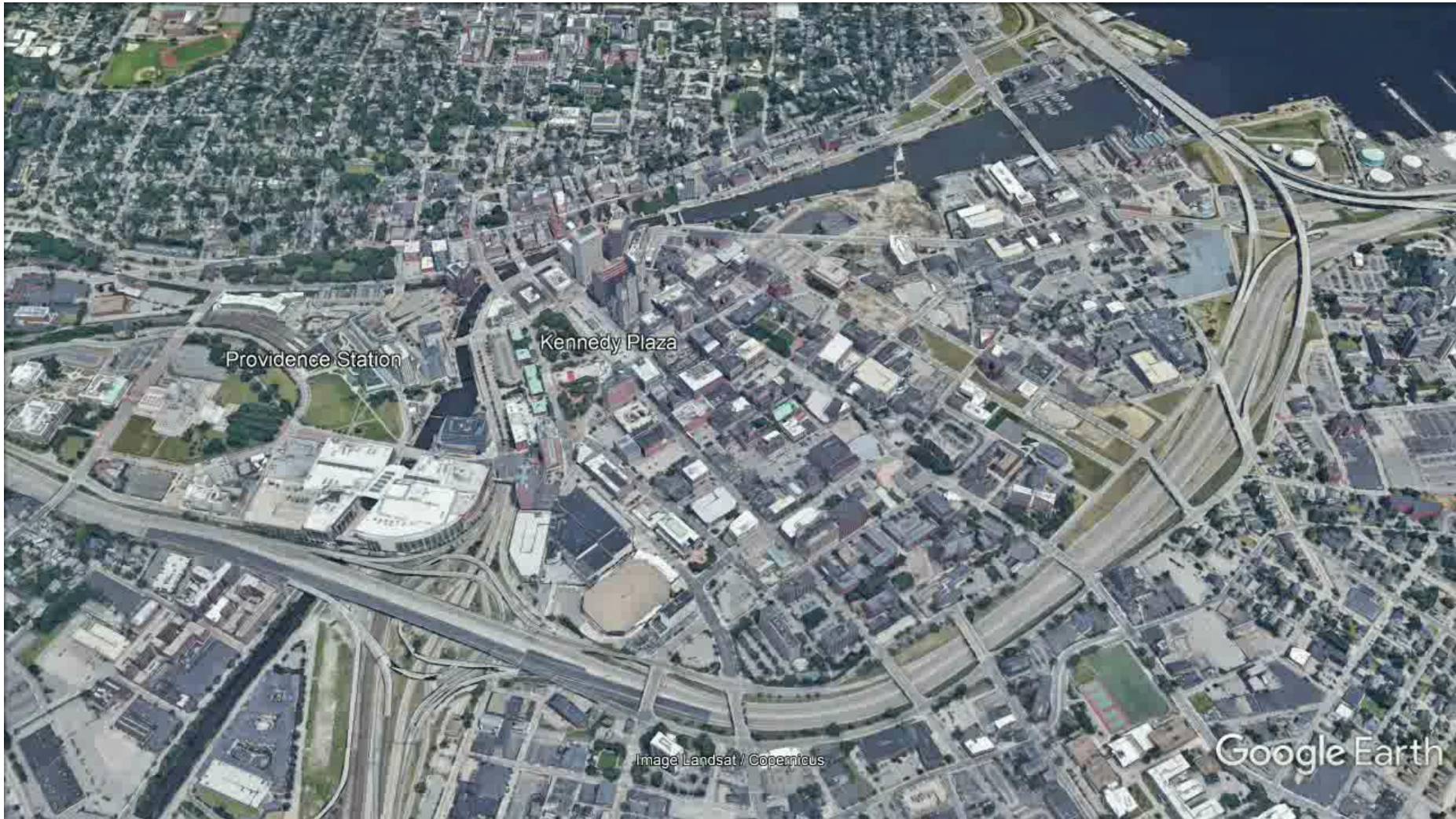


# Dorrance Street Transit Center General Location





# Dorrance Street Transit Center General Location

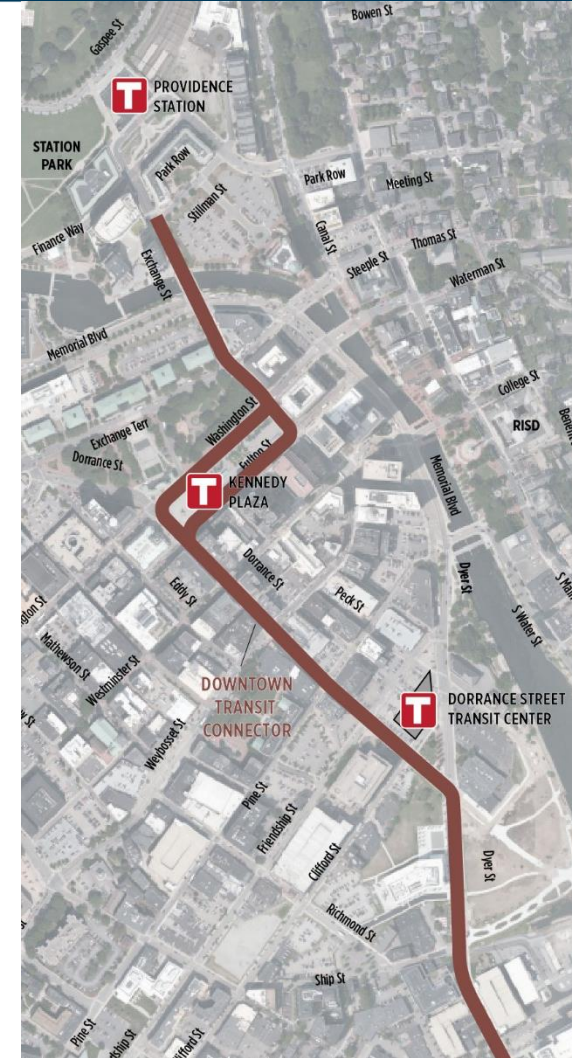




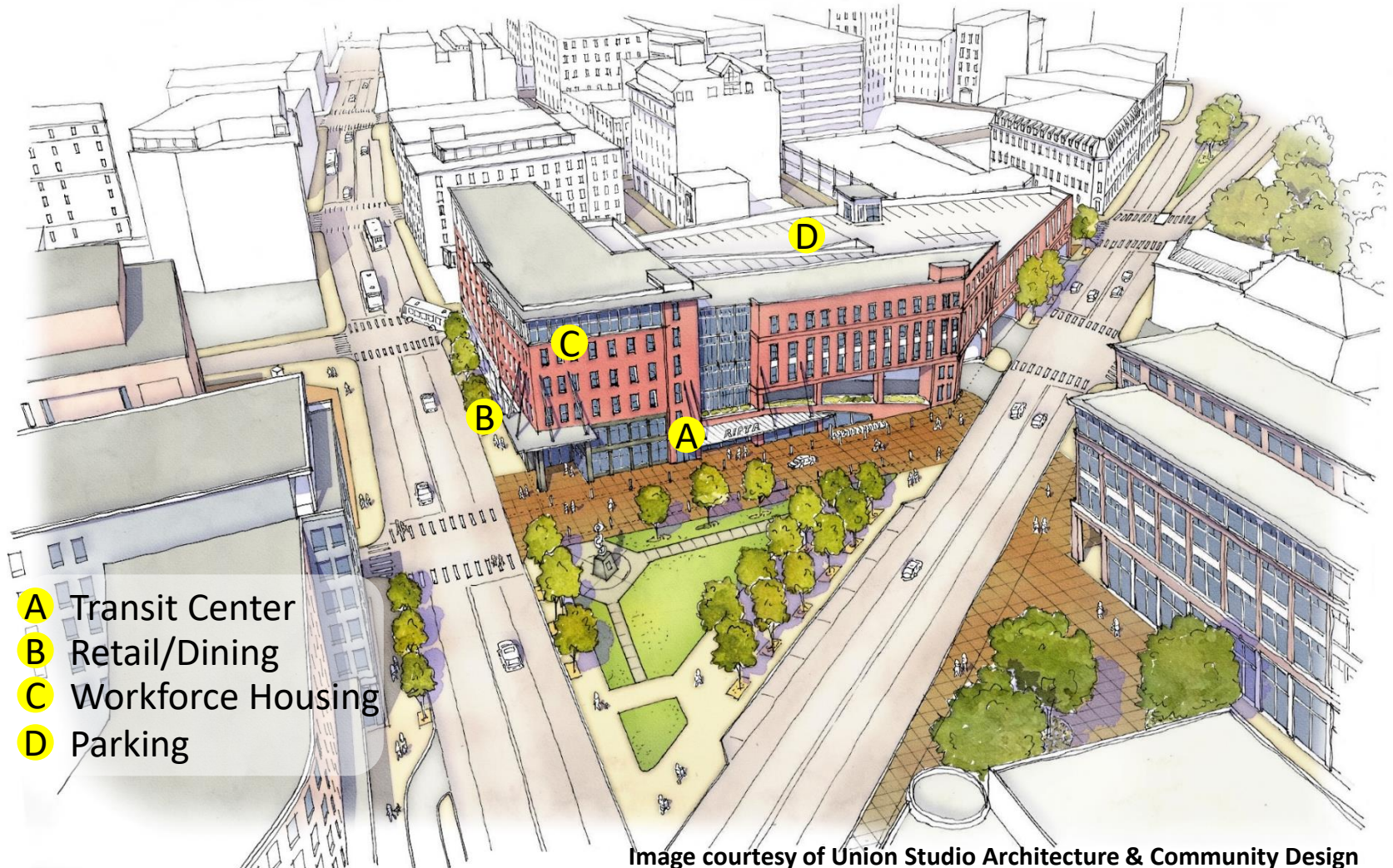
# Dorrance Street Transit Center General Location

## Why is this location preferable?

- Proximity to the core of downtown
  - Accounts for the movement towards the Jewelry District
- Proximity to the Downtown Transit Connector (DTC)
  - Ease of operational access
  - Convenience for passengers
- Adequate space to develop a facility
- Allows buses that are running express to get out of downtown quickly, without contributing to congestion downtown



# Dorrance Street Transit Center Preliminary Rendering





# Dorrance Street Transit Center Preliminary Site Plan



Image courtesy of Union Studio Architecture & Community Design

# Dorrance Street Transit Center

## RIPTA passenger amenities to include:

- Restrooms
- Interior waiting space
- Expanded customer service center
- Ticket vending machines
- Digital screens indicating bus arrivals and departures
- Public art





# Dorrance Street Transit Center

## Other potential amenities might include:

- Bicycle repair/maintenance center
- Transit supportive retail
  - Coffee shops, Amazon lockers
- Community event space
- If you have suggestions for other amenities you'd like to see, please let us know by sending us a message in the chat or submitting a comment online.



# Dorrance Street Transit Center

## RIPTA operational features to include:

- Shorter distances between transfers with no exposure to weather
- Sufficient passenger loading areas to accommodate future growth per the Transit Forward RI 2040 plan
- Seamless connection to the Downtown Transit Connector, as well as connections to Kennedy Plaza, Providence Station, and destinations beyond





# Dorrance Street Transit Center Preliminary Building Program

## Ground Floor

- 15 covered bus berths
- Interior RIPTA services
- Retail and dining

## Upper Floors

- Administrative offices
- Workforce housing
- Parking garage

- A** Customer Service
- B** Restrooms
- C** Waiting Area
- D** Ticket Vending Machines

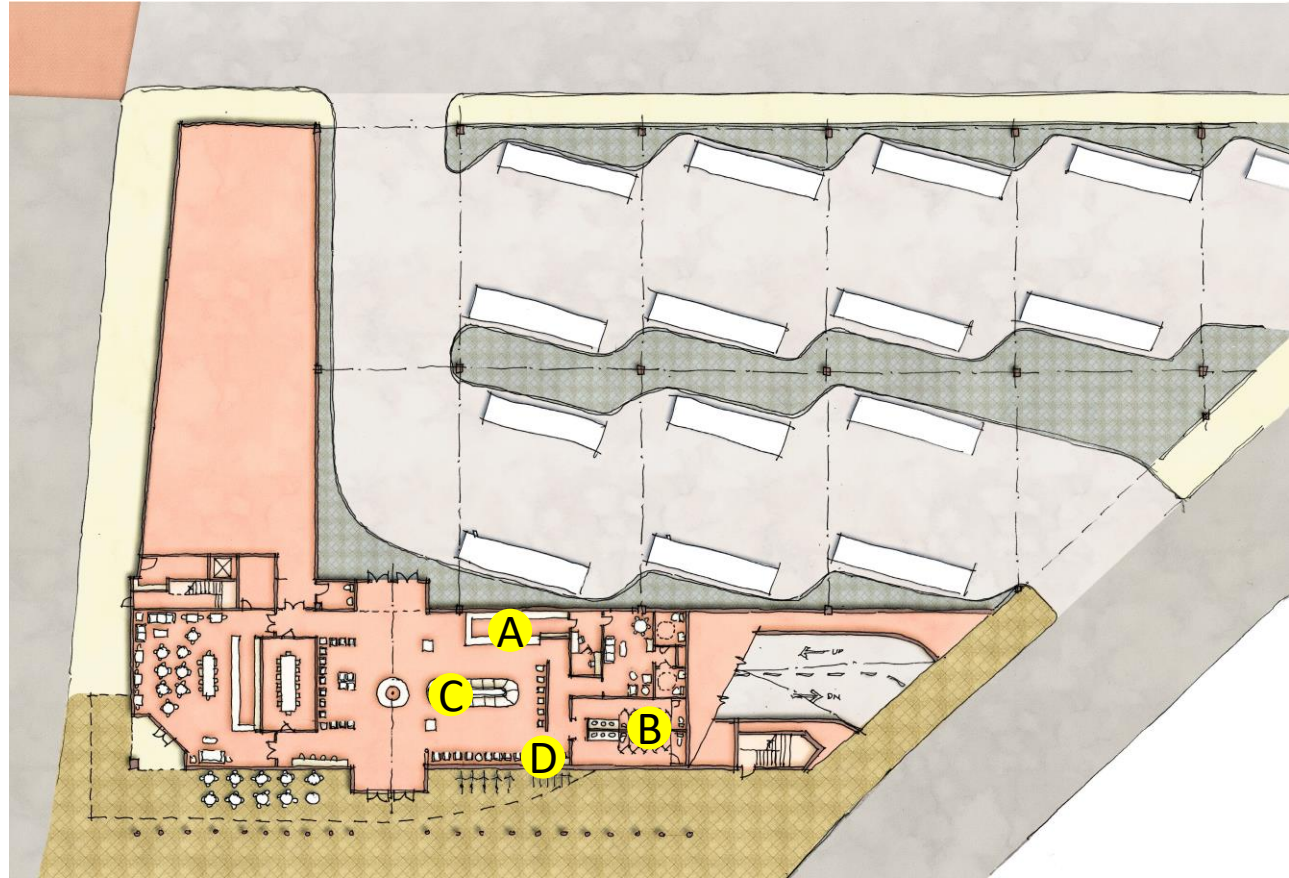


Image courtesy of Union Studio Architecture & Community Design

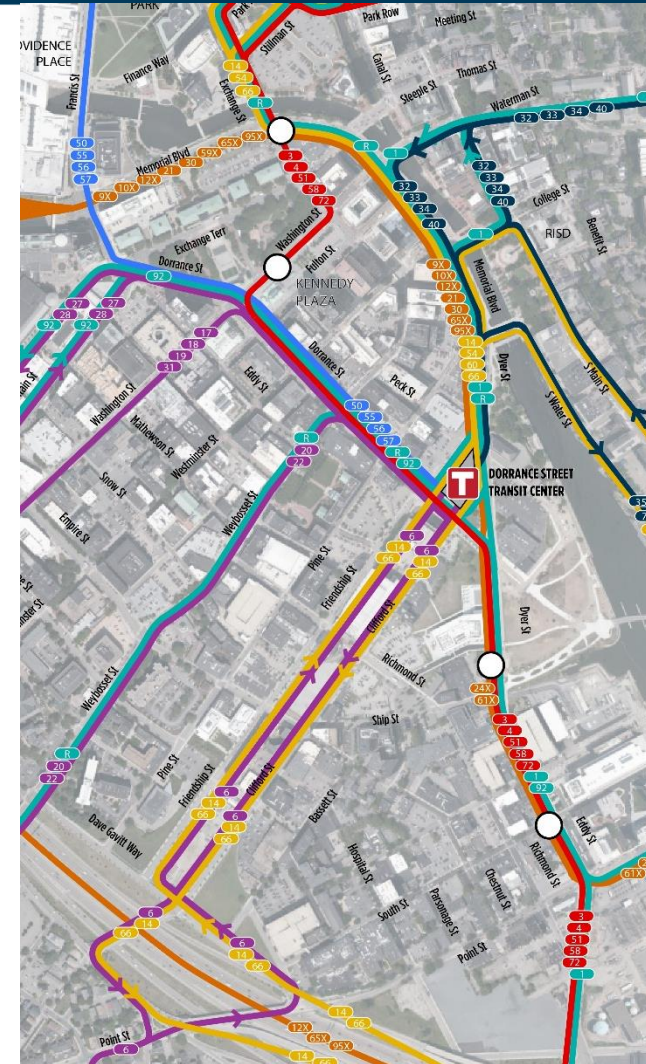
# Dorrance Street Transit Center Preliminary Bus Routing

## Proposed service changes include:

- Memorial Boulevard and Dorrance Street become more important to operations
- All transfers possible at Kennedy Plaza today will be maintained
- Impacts to travel times will be minimal

## Meeting follow-up

- Proposed routing maps will be emailed to meeting attendees and will be available on [RIPTA.com/TransitCenter](http://RIPTA.com/TransitCenter)
- RIPTA will complete assessments of route changes in accordance with Federal and State laws

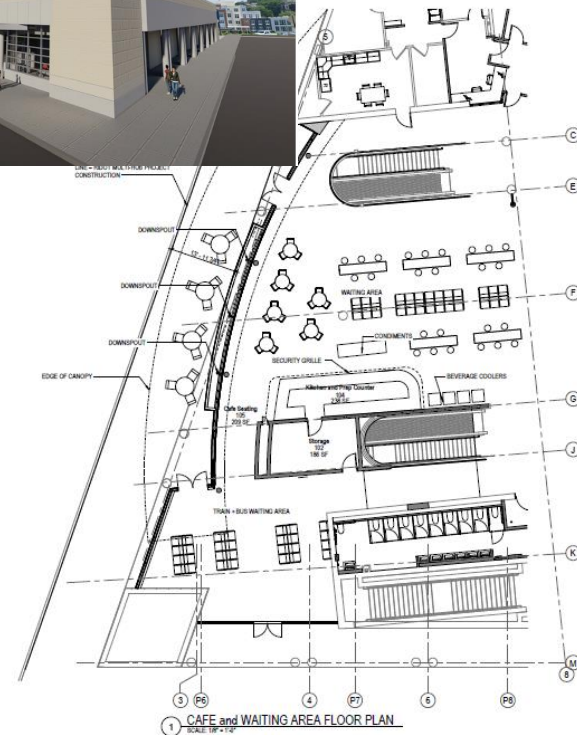




# Impacts to other transit facilities

## What does this project mean for Providence Station?

- RIPTA will have direct bus service to Providence Station via the R-Line, the Downtown Transit Connector, and Routes 50, 55, 56, and 57
- RIDOT and Amtrak finalizing plans for the Providence Station SOGR project to modernize and expand the interior space of the 11<sup>th</sup> busiest Amtrak station in the nation (pre-pandemic).
- Utilizing a \$12.5M FRA grant thanks to Senator Reed and our Congressional Delegation.
- Project will accommodate increased rail and bus passengers with new waiting area, new restrooms and café space.
- Project will include pedestrian improvements/repairs from the train station to Francis Street.
- Project to be advertised for construction in the spring 2022.



# Impacts to other transit facilities

## What does this project mean for Kennedy Plaza?

- RIPTA will coordinate with the City of Providence on bus stops at Kennedy Plaza for passengers traveling here.
- Five-minute service will be maintained on the Downtown Transit Connector corridor
- Service on Dorrance Street will connect Routes 27, 28, 50, 55, 56, 57 and 92
- RIPTA will coordinate with the City of Providence to ensure continuity of service as both RIPTA and the City's projects advance





# Next Steps

- RIPTA and RIDOT are coordinating on a Public/Private Partnership (P3) in the development of this project. This P3 will create a structure that will ensure the long-term viability of this project, including maintenance and daily operations of the facility
- Project will take 2-3 years to complete
- RIPTA will remain in Kennedy Plaza until then, but detours will be required in the short term to accommodate City of Providence's planned work in Kennedy Plaza
- RIPTA will continue engaging riders as the project progresses, including workshops specifically about route design

- Feedback from today's meeting will be processed and responded to no later than March 31, 2022 on [RIPTA.com/transitcenter](https://www.ripta.com/transitcenter)
- Public comment will be accepted through March 31, 2022 through [RIPTA.com/transitcenter](https://www.ripta.com/transitcenter) or by calling 784-9500 x1101
- Feedback received through this process will be responded to and/or incorporated into plans moving ahead





- If you have a question, please enter it into the Q&A section or raise your hand.
- Every attempt will be made to answer every question tonight
- All questions will be responded to at [RIPTA.com/TransitCenter](http://RIPTA.com/TransitCenter)
- To receive notifications as this project progresses, please sign up for the project e-mail list



Image courtesy of Union Studio Architecture & Community Design