



Resources for People Who Have A Concussion

A concussion is an example of a traumatic brain injury, or TBI. A TBI is caused by a bump, blow, or jolt to the head or a head injury that disrupts your brain's normal functions. Not all blows or jolts to the head result in a TBI, and a TBI can be mild (a brief change in mental status or consciousness) to severe (an extended period of unconsciousness or amnesia after the injury).

If you have to go to the doctor because you have a concussion, be sure to follow all of the directions that the doctor gives you. There are also other places in the community that can help you.

General Support for People With A TBI

The Brain Injury Association of Rhode Island (BIARI) Resource Center

Get help finding the services and supports for anyone who has had a TBI.

401-228-3319 <https://biari.org/>

Rhode Island Department of Education (RIDE) Office of Student, Community, and Academic Supports

All public school districts have special education programs that provide instruction to meet the unique needs of a child with a disability.

401-222-3505 <https://www.ride.ri.gov/InsideRIDE/RIDEOffices/Student,CommunityAcademicSupports.aspx>

Ocean State Center for Independent Living (OSCIL)

Independent living services to enhance self-direction and promote integration into the community

401-738-1013 <http://www.oscil.org/>

Rhode Island Parent Information Network (RIPIN)

Assists individuals, parents, families, and children to achieve their goals for health, education, and socioeconomic well-being by providing information, training, education, support, and advocacy for person/family-centered care

401-270-0101 <https://ripin.org/services/services>

The Governor's Commission on Disabilities (GCD)

Advocates to ensure that people with disabilities, including those caused by TBI, are able to reach their full potential and exercise their rights and responsibilities as a citizen

401-462-0100 or 711 (TTY) <http://www.gcd.ri.gov/>

Disability Rights Rhode Island (DRRI)

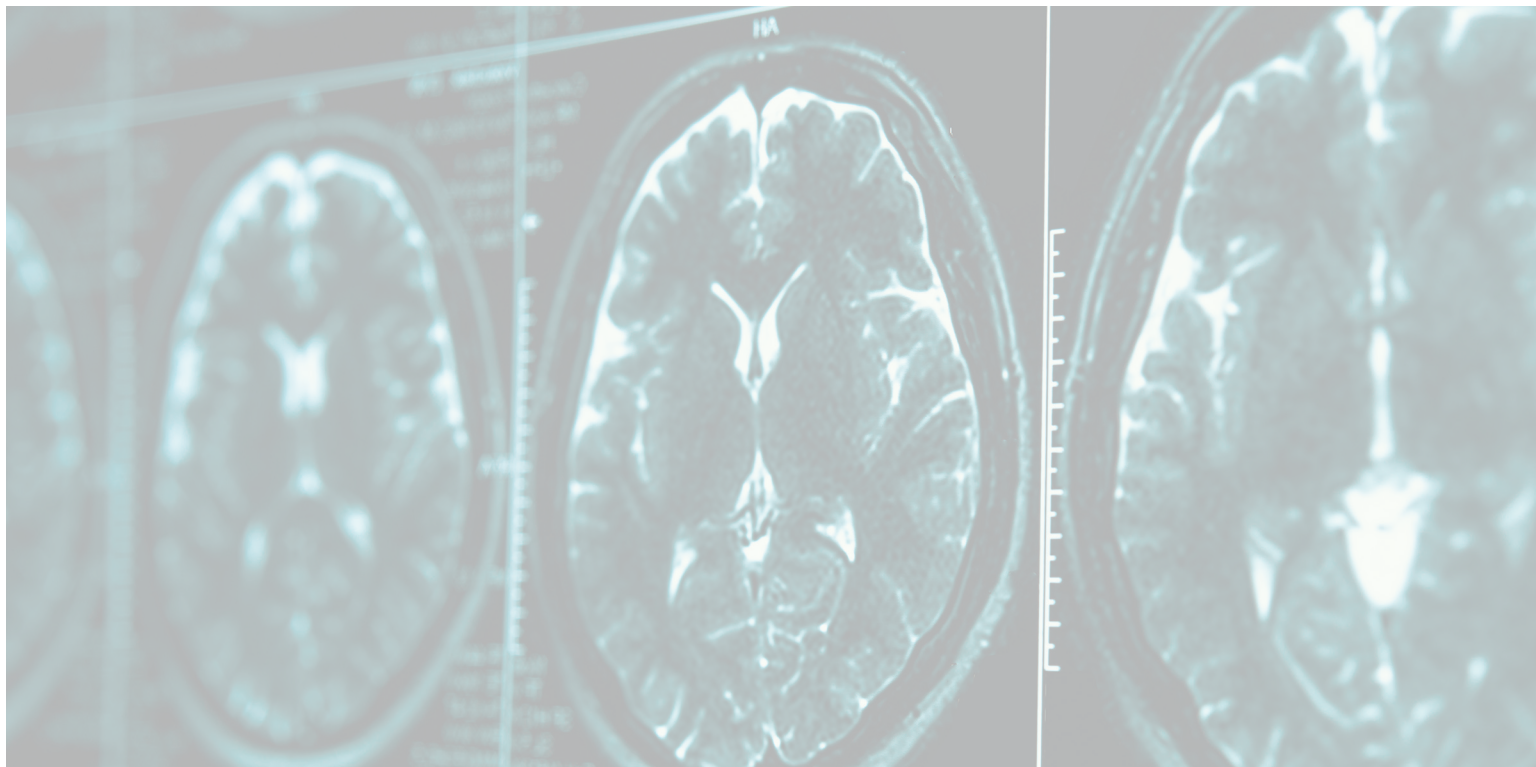
Protection and advocacy system for people with all types of disabilities

401-831-3150; 401-831-5335 (TTY) <https://www.drri.org/>

Department of Labor and Training (DLT), Arrigan Rehabilitation Center

Outpatient rehabilitation facility offering services for Workers' Compensation patients

401-243-1200 <http://www.dlt.ri.gov/arrigan/>



Medical and Financial Support

Department of Behavioral Health, Developmental Disabilities and Hospital (BHDDH)

401-462-3421 <http://www.bhddh.ri.gov/>

Department of Human Services (DHS)

401-462-1000 <http://www.dhs.ri.gov/>

Supplemental Security Income (SSI) and Social Security Disability Insurance (SSDI)

800-772-1213, 800-325-0778 (TTY)

SSI website: <https://www.ssa.gov/ssi/>

SSDI website: <https://www.ssa.gov/disability/>

DLT, Temporary Disability Insurance (TDI)

401-462-8420 (Select Option 1 for an application.) <http://www.dlt.ri.gov/tdi/>

Medicaid

Medicaid is based on eligibility requirements such as age, type of disability, and amount of financial need. Some of the Medicaid programs include:

- Rite Care
- Medicaid Expansion
- Katie Beckett Program

401-784-8100 <https://www.benefits.gov/benefit/1639>



For information on support groups and other resources, call the Health Information Line at **401-222-5960**